



USH5005-IM

5-Port 10/100M SOHO Nway Switch

Mini Size Fast Ethernet Switch with Internal Power



FEATURES

- Complies with IEEE802.3 and IEEE802.3u standards
- 5 x RJ-45 ports for 100Base-TX and 10Base-T connectivity
- Supports NWay protocol for speed (10/100Mbps) and duplex mode (Half/Full) detection
- All ports with auto MDI-X function for switch-to-station and switch-to-switch connection with non crossover cable
- Supports full and half duplex operation on all ports
- Operates at maximum packet filtering and forwarding rate
- Store and forward architecture filters fragment and CRC error packets
- Supports extensive LED indicators for network diagnostics
- Supports 1K MAC address entries in whole system
- 1M bits buffer memory
- Mini size metal case design
- Convenient internal switching power, 100 ~ 240V AC

PACKAGE CONTENTS

- One 5-port SOHO Nway Switch
- One User's Manual
- One Internal Power Cord

OVERVIEW

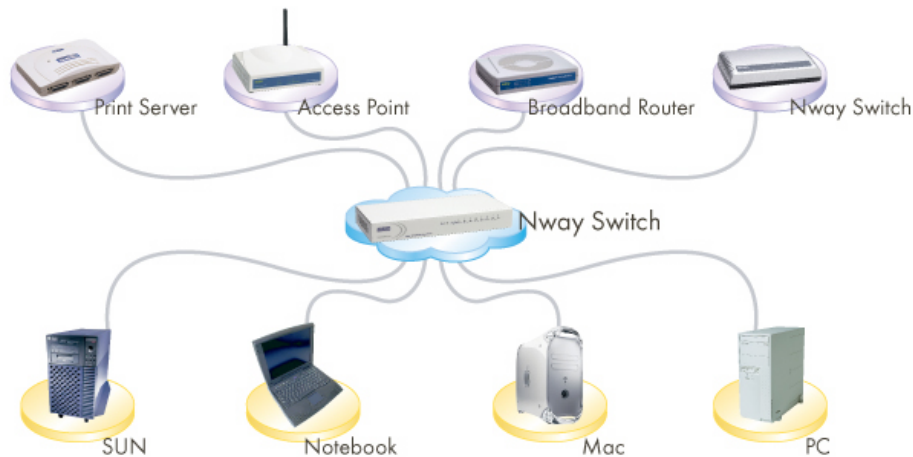
This is a 10/100 Mbps Nway switch with outstanding performance and high efficiency. With the five ports 10/100M auto-negotiation function, it fulfills the needs of connecting the partners of network with best network speed and duplex mode automatically. It's the ideal LAN switch for small office and home network. Unlike shared 10/100 Mbps networks, switch eliminates the bandwidth congestion problem by providing dedicated bandwidth. Duplex mode also doubles the bandwidth by enabling two-ways communication. All ports support auto MDI/MDI-X function, connecting switch to switch is more convenient with non-crossover cable.

Store-and-forward service is the proof of low latency and non-error package delivering, such as CRC and runt error. Plug & play and all kinds of network protocols compilation make the installation & network management easily and fast. The Easy-to-tell LED indicators are the best helper of users to know the working situation of the switch. The switch is plug-and-play without any software to configure and also fully compliant with all kinds of network protocols. Moreover, plenty of diagnostic LEDs on the front panel provide the operating status of individual port and whole system.

A built-in switching power supply is suitable for universal power line AC source. Without external power adapter, it makes your installation environment clean and easier for power cable management.

SPECIFICATIONS

System Specifications	
Ethernet Standard	IEEE802.3 10BASE-T IEEE802.3u 100BASE-TX IEEE802.3x Full duplex operation and flow control
Interface	5 * 10/100Mbps RJ-45 Ethernet ports
Uplink	Auto MDI/MDI-X (Auto Crossover)
Network Speed	10/100Mbps Full/Half duplex mode auto detection
Diagnostic LED	System: Power Link/Act: 10Mbps; 100Mbps
MAC Address Entry	1K MAC entries
Memory	1M bits for the whole system
Filtering / Forwarding Rate	10Mbps: 14,880pps/14,880pps 100Mbps: 148,800pps/148,800pps
Installation	Desktop metal case, compact size
Operating Temperature	0° ~ 55°C (32° ~ 131°F)
Operation Humidity	10% ~ 95% (non-condensing)
Dimension	150 (L) x 85 (W) x 27 (H) mm
Weight	355g (Net)
Power Supply	Internal Power 100 ~ 240VAC, 50/60Hz, 3.3V 2A
Emission Certification	CE, FCC, VCCI Class B

APPLICATION DIAGRAM**10/100Mbps Nway Switch Application Diagram**

The Nway Switch establishes a local area network with all 10Mbps, 100Mbps, Full Duplex or Half Duplex network equipments.

ORDERING INFORMATIONS

Model	Description
USH5005-IM	5-port 10/100M SOHO Nway Switch (Internal Power)

EUSSO Technologies, Inc. is a dedicated data communication and networking company. With professional experiences in design, production, marketing and service support, we deliver the full range networking products including Gigabit Ethernet, Fiber Optic, Wireless LAN, Switches, Hubs, LAN cards, PCMCIA adapters, Converter, Transceivers. As well as Internet Telephony Gateway, Print Servers, Internet Sharing Servers and many others.

2006/8/3 ver 1.0

**EUSSO Technologies, Inc.**

6F, No.389, Sec.2, Chung Shan Road, Chung Ho City, Taipei 235-58, Taiwan

TEL:+886 (2) 8221-4616 E-mail:sales@eusso.com

FAX:+886 (2) 8221-4607 <http://www.eusso.com>