



UPS1211-M2

USB2.0 Multi-Function Print Server

Share a printer with fax, scan, print functions on your network



FEATURES

- One USB2.0/1.1 port with 480Mbps (High-Speed), 12Mbps (Full-Speed), and 1.5Mbps (Low Speed) data transmission rates.
- One 10/100Mbps auto speed Fast Ethernet LAN port
- Supports Print, Scan, Fax and Card Reader
- Share a printer with everyone on your network and work with most USB printers
- Easy to install and manage with Windows-Based setup program and Web Browser Management
- Supports Windows 2000 / XP
- Connect your multi-function printer directly to the Network to share printing resources
- Stand-Alone print server, no dedicated PC required
- Compatible with both half and full duplex networks
- Integrated seamlessly with your Ethernet Network
- 1Mbyte Flash Memory and 2Mbyte SDRAM

Package Contents

- One USB2.0 port Multi-Function Print (MFP) Server
- One Setup Utility CD-ROM
- One Quick Installation Guide
- One AC Power Adapter

OVERVIEW

The UPS1211-M2 single USB2.0 port Multi-Function Printer (MFP) server is compatible with most popular USB printers from Canon, Epson, Lexmark, Avision, HP, Samsung, Brother, and other MFP manufacturers. Multi-function Printer provides an easy and convenient all-in-one function such as Print, Fax, Scan, and Card Reader to share printing resource through a network.

The UPS1211-M2 print servers is an external and stand-alone device that let you place your printers, plotters, or MFP printers at convenient locations directly on your Ethernet network, and be able to increase network printer performance and easy for management.

The MFP print server provides an embedded web server that can be accessed via a prop web browser. We also subsidiary Windows-based PSAdmin utility which help administrator to setup print server environment under Windows 2000/XP system. The MFP server supports industrial standard TCP/IP network protocol. In addition, UPS1211-M2 Includes a 10/100M Switch port, so you can easily link PC, notebook or server to your network. This LAN port is auto speed negotiation, and has automatic MDI/MDIX crossover detection, so you don't have to worry about the cable type. The maximum bandwidth of LAN port is up to 200Mbps at full-duplex mode and 100M at half-duplex mode.

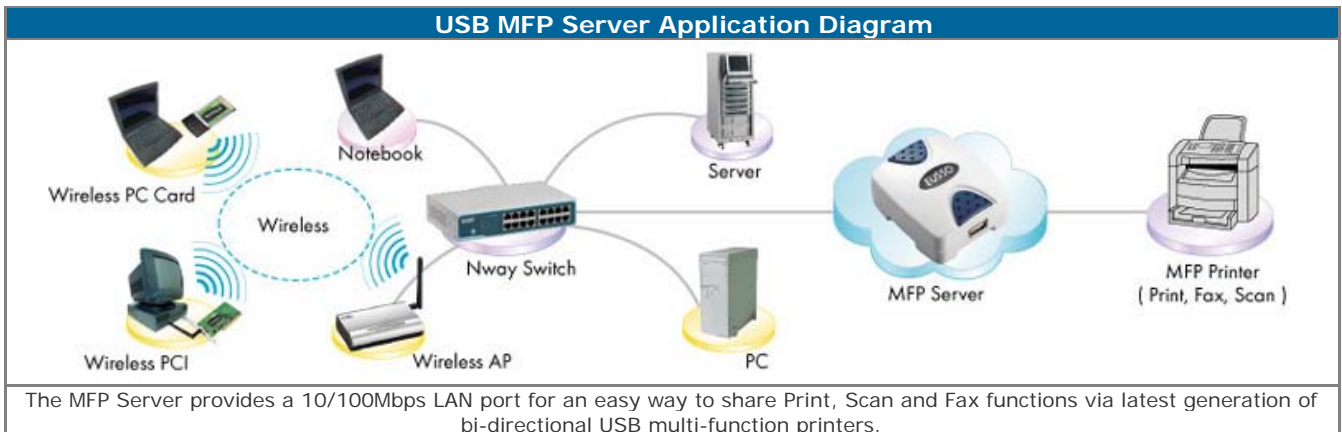
A user-friendly setup wizard makes installation easy, the compact size design fits anywhere, and USB compliant port bring efficiency to expend your network in one cost-effective device.

SPECIFICATIONS

System Specifications	
Host Interface	1 * USB2.0/1.1 Port 1 * RJ-45 10/100M LAN Port (IEEE802.3/802.3u Standard)
Network Protocol	TC /IP, UDP
Operating System	Windows 2000 / XP
Management	Windows Setup Program (PSAdmin) Web Browser Management Configuration Utility
MFP Sharing Support	Print, Scan, Fax, Card Reader
Advanced Feature	DHCP Client Support Support MFP Proprietary Utility Support WIA (Windows Image Acquisition) Scan Utility of Windows 2000/XP Firmware Upgrade (WEB Management)
System Memory	1Mbytes Flash and 2Mbytes SDRAM
LED Indicators	Power/Status: Orange USB Link: USB2.0 (green) / USB1.1 (orange) LAN Link: 100Mbps (green) / 10Mbps (yellow)
Power Supply	3.3VDC, 2A Mini-Size Power Adapter
Dimension	74 (L) x 63 (W) x 30 (H) mm
Weight	57 g
EMI Certifications	CE / FCC Class B

Environment

Operating Temperature	0°C to 55°C (32°F to 131°F)
Storage Temperature	-20°C to 70°C (-4°F to 158°F)
Operating Humidity	10% to 95% Non-Condensing
Storage Humidity	0% to 95% Non-Condensing

Application Diagram**ORDERING INFORMATIONS**

Model	Description
UPS1211-M2	1-USB2.0 Port Mini-Size 10/100Mbps MFP Server

EUSSO Technologies, Inc. is a dedicated data communication and networking company. With professional experiences in design, production, marketing and service support, we deliver the full range networking products including Gigabit Ethernet, Fiber Optic, Wireless LAN, Switches, Hubs, LAN cards, PCMCIA adapters, Converter, Transceivers. As well as Internet Telephony Gateway, Print Servers, Internet Sharing Servers and many others.

2006/9/20 ver 1.0

**EUSSO Technologies, Inc.**

6F, No.389, Sec.2, Chung Shan Road, Chung Ho City, Taipei 235-58, Taiwan

TEL:+886 (2) 8221-4616 E-mail:sales@eusso.com

FAX:+886 (2) 8221-4607 <http://www.eusso.com>